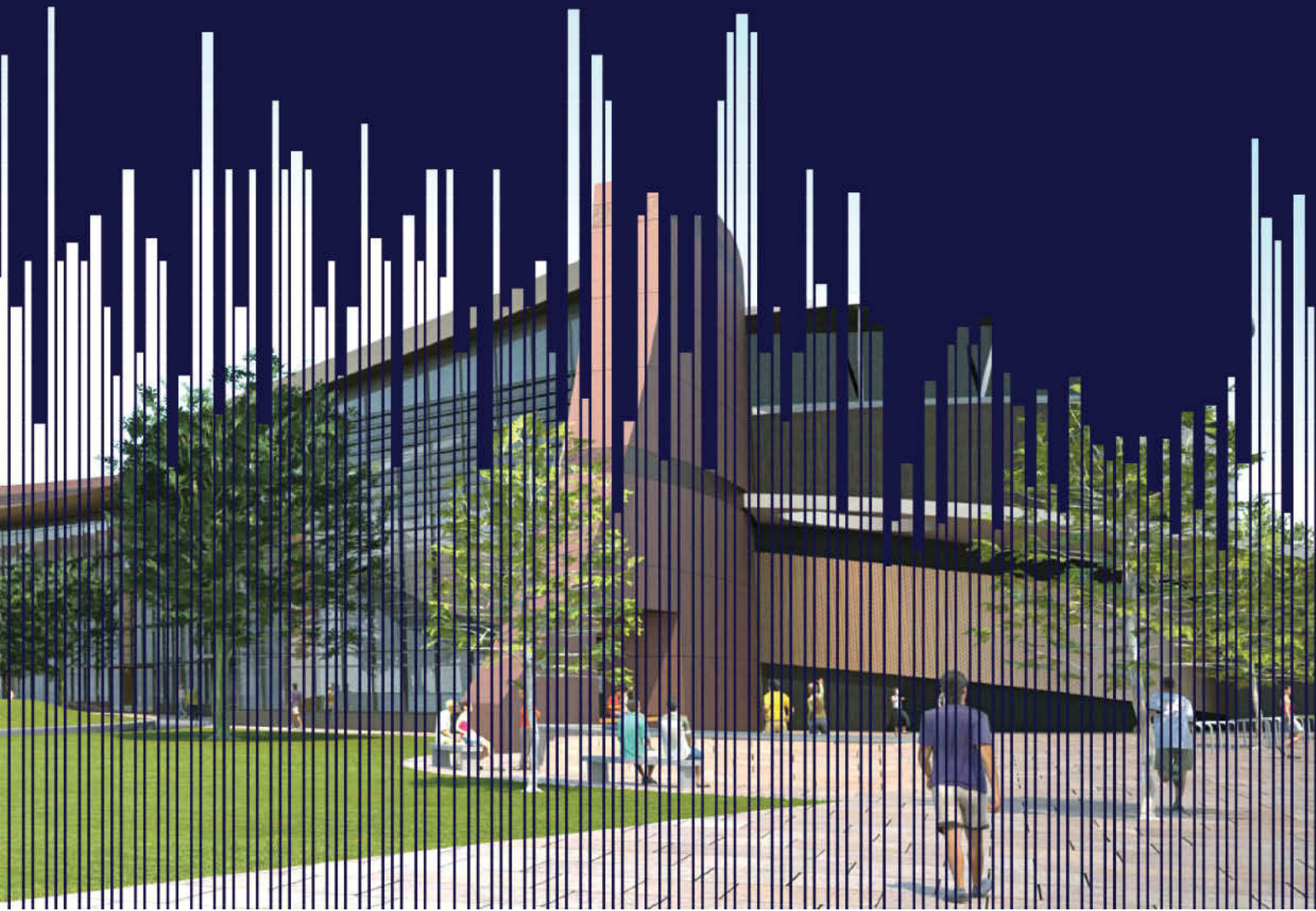


STAFF BENEFITS PACKAGE



Introduction

*South Cheshire College aims to give its staff the best
experience possible.*

*Through the development of a number of schemes we
have come to be recognised as an Employer of Choice.*

AWARDS

BEST COMPANIES



South Cheshire College achieved Best Companies 'Star Status' for 2008.

The college landed a single star status (first class) award and is part of an elite band of organisations in the UK to achieve the recognition.

South Cheshire College was the only Further Education college to appear on the 2008 accreditation list produced by Best Companies Ltd - an organisation dedicated to improving life in the workplace.

INVESTOR IN PEOPLE



The College has been recognised as an Investor in People since 1996.

The award recognises the quality of the College's commitment to effectively plan, implement and evaluate the development of its entire staff in support of strategic objectives.



HEALTH AND WELFARE

Committed to the health and welfare of our staff, we offer a range of services and benefits:

- Private healthcare
- Reduced corporate rates on the Universities & Colleges Dental Plan, Medicash and Healthshield.
- On site occupational health appointments
- Healthy eating advice
- On site flu vaccinations
- Smoking cessation clinics
- In house confidential counselling
- Stress assessment and relaxation sessions
- Two free holistic/beauty therapy treatment sessions per year
- On site fitness centre including free membership
- Work/life balance – flexible working schemes
- Contribution towards sight tests and also for spectacles if for VDU use
- Drop in health checks – including cholesterol and blood pressure testing

Health, Safety and Welfare Manager

We employ a Health, Safety and Welfare Manager (HS&WM) who has a nursing qualification, to offer support and advice to students or staff on any personal matters.

There is a range of health promotion materials in the Medical Centre and the facilities to have basic health checks and advice.

Counselling

Our qualified counsellors offer one-to-one, confidential counselling to all staff and enrolled students on any personal concerns or difficulties, whether they involve life in college or outside.

STAFF BENEFITS

- ☺ Eligibility to join either the local government pension scheme or the teacher's pensions scheme
- ☺ Flexible working schemes:
 - Career break
 - Part time / Part year working
 - Phased retirement scheme
 - Flexible retirement scheme
- ☺ Generous sickness, maternity, adoption and paternity leave schemes
- ☺ Continuing professional development opportunities with free courses and financial support (where eligible)
- ☺ Annual salary reviews
- ☺ Retirement gift scheme
- ☺ Social events
- ☺ Internet and email access
- ☺ Excellent location, convenient access and travel links

STAFF DISCOUNTS

Will Writers *Trust Inheritance*

Trust Inheritance covers all of the UK offering a home visit service, providing a unique Will Writing Service in the comfort of your own home at a discount of 25% to all college staff. For more information visit their website

www.trustinheritance.com

ON SITE FACILITIES



Starting Point Nursery



Our Child Care Centre, situated in its own premises on the College grounds, offers quality childcare for children, plus 'After School' and 'Holiday Club' services for primary school children. Children of students and staff of the College and of the general public are all welcome.

All staff are fully qualified and we provide a warm, secure and happy environment to encourage all aspects of the children's development.

There is a landscaped outdoor play area. Indoors, there are loads of toys, books, computers, art materials, a dressing-up corner and regularly-changing display areas. Oh, and a huge pile of beanbags for when it all gets too much and a nap becomes necessary to 'recharge the batteries'!

Staff can also join the College's Child Care Voucher Scheme through Computershare Voucher Services (formerly BusyBees) please visit <http://www.computersharevoucherservices.com/Pages/home.aspx>

This is a salary sacrifice scheme and therefore there are tax savings.





Fitness Centre

There is a well established and successful Fitness Academy at South Cheshire College.

The Fitness Academy offers a supervised fitness centre with a full range of equipment and qualified staff.

The centre has televisions broadcasting music and an excellent sound system which will help to maintain your interest whilst working out.

- Various fitness classes
- Individual fitness programmes designed by qualified instructors
- Free membership is available for staff



INSPIRATIONS

Hair and Beauty Salon

Staff are eligible to two free treatments per year in the college's excellent 'Inspirations' hair and beauty salons

Inspirations incorporates the hair, beauty and holistic therapy training salons at South Cheshire College.

Clients can enjoy a wide range of competitively priced treatments in the hairdressing salons, the two beauty salons and nail clinic. Top of the range hair and beauty products used in the salons are also available for purchase in the comfortable reception area.



Dane Bank Travel Centre

With a generous 35 days plus Christmas closure and 8 bank holidays per year holiday entitlement, booking your holiday couldn't be easier with the convenience of having our ABTA approved Dane Bank Travel Centre on site.



- Package holidays
- Party hotspots
- Relaxing beach
- Young fun
- Long haul
- Early or late summer deals
- Villas
- Lakes and mountains
- Cottages within the UK
- Sports and activity holidays



Dane Bank Theatre

Dane Bank, a community theatre, is available for hire for functions, conferences, seminars, charity events, plays and concerts.

Our theatre hosts various dance, comedy, ballet and pantomimes at various times of the year.



College Restaurants

The training restaurant at Dane Bank offers some of the best cuisine in the area. Meals are cooked and served by South Cheshire catering and hospitality students under supervision. The restaurant may be used for functions during the week and at weekends. Ideal for buffets, parties, annual dinners or, with bar facilities, as a refreshment area for conferences.

Depending on availability, members of the college and the public are welcome to book for meals at lunchtimes and selected evenings.

The Piano Bar is available to staff for less formal eating and meetings.

Other Facilities



Café Chill

Café Chill is a central place for students to meet and socialise. It has a wide range of inexpensive food on offer from sandwiches to full meals and breakfasts to puddings.



Library

The library offers a range of resources including inter-library loans, latest novels, periodicals etc and specialist staff are on hand to help you find all the information you need.



Shop

The College Shop is stocked with a wide range of equipment and refreshments. Teaching staff have an allocation each year to purchase teaching materials.



AN EXCITING NEW STATE-OF-THE-ART CAMPUS



South Cheshire College has exciting plans for a new flagship campus which will lead education in Crewe and Nantwich into a new era. The project centres on the creation of a carbon-neutral building which is environmentally sustainable.

The College will be completely rebuilt on its Dane Bank site to prepare for the 21st century and provide a first-class education facility at the heart of the community. Curriculum areas will be grouped together in clusters and connected by vibrant social spaces and a blend of indoor and outdoor zones in an attractive setting. There will be a central student heart, with outlets and facilities and areas to showcase student work.

Members of the local community will be able to make use of the state-of-the-art facilities and the new building will have a sense of 'home' and a 'family' atmosphere.

The final proposals and design of the new campus will hopefully be supported and signed off in summer 2008, working towards a September 2010 opening.

